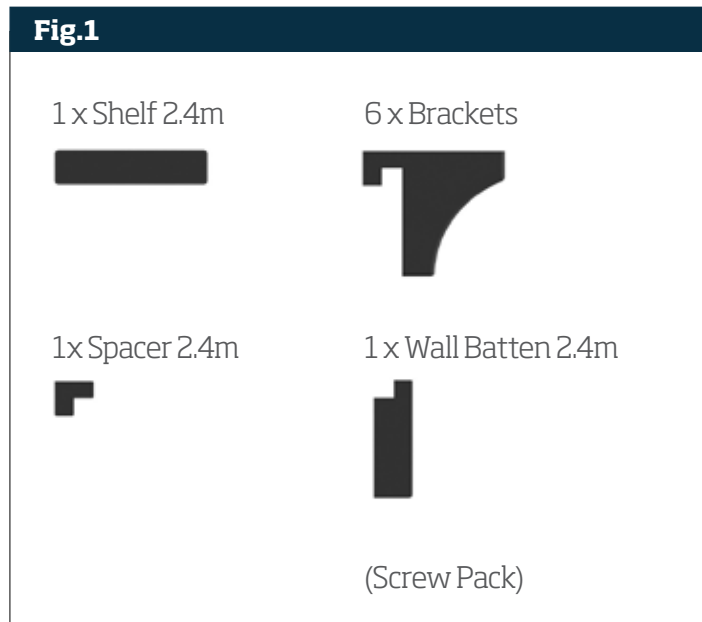


# **Primed Picture Rail Shelf**

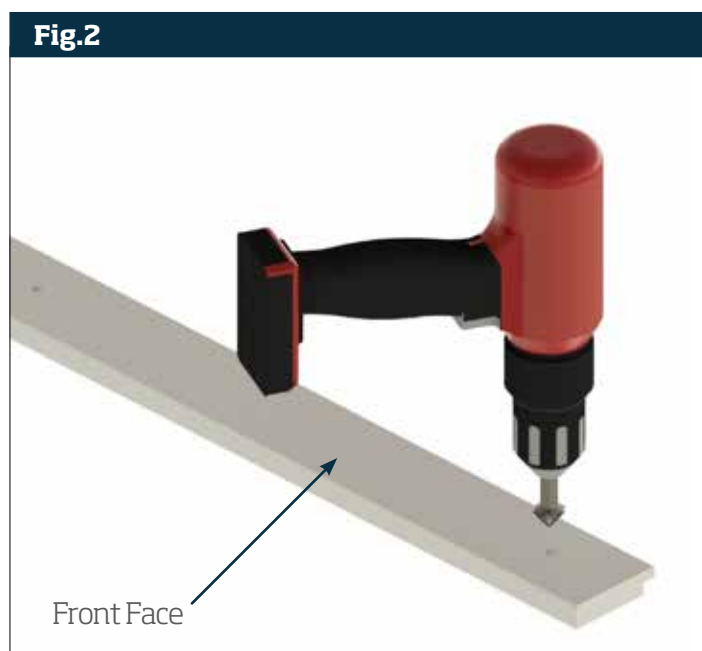
Fitting  
Instructions



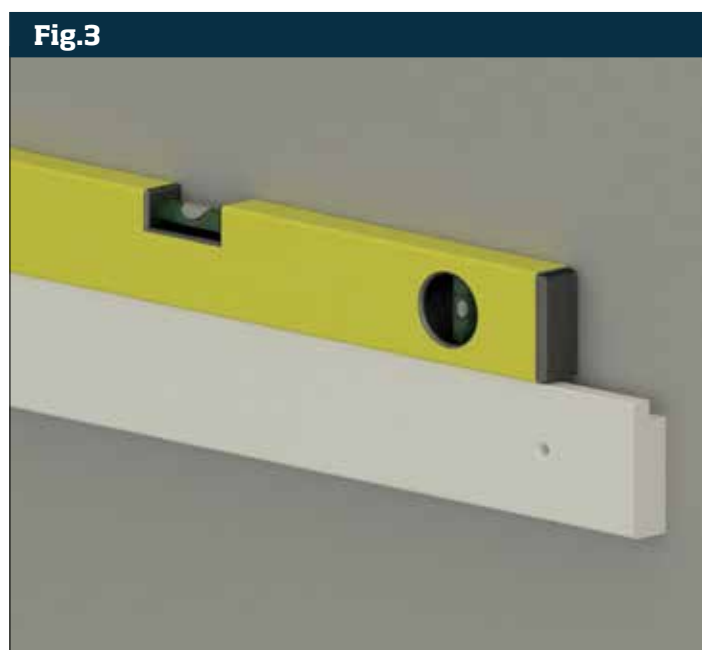
Before installing, please check that all component parts are present (**Fig 1**).



To start, measure and mark front face of wall batten and drill a series of  $\varnothing 4.5\text{mm}$  holes along the wall batten at max 400mm centres and countersink the holes. These will be covered by the brackets so check that the holes and brackets are at preferred locations (**Fig 2**).

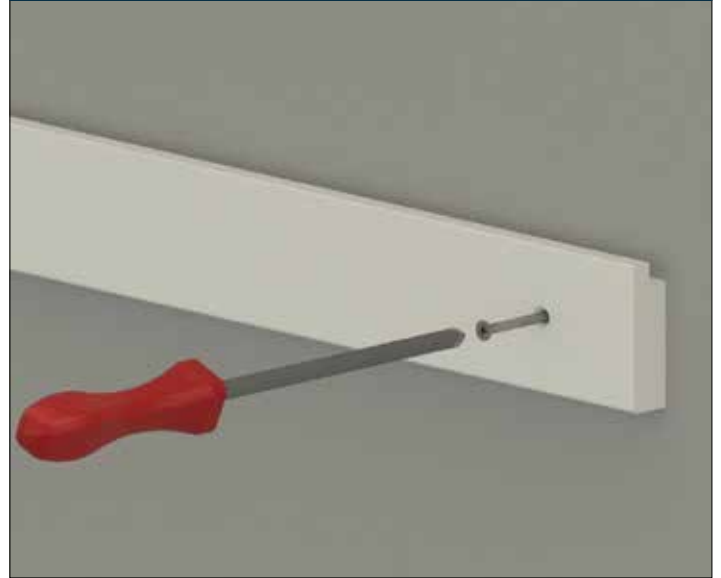


Offer wall batten up to the wall at the height required ensuring that the rebate is at the top and facing the wall. Check level using spirit level (**Fig 3**).



Mark through each of the previously drilled holes using a scribe or screw to establish location for wall fixings. Remove wall batten and drill and plug marked points using appropriate plugs to suit wall construction. Fix wall batten to wall using 4.2mm x 50mm screws supplied ensuring that screw heads are sunk below front face of wall batten (**Fig 4**).

**Fig.4**



Offer the brackets onto the wall batten so the hook of the bracket fits into the rebate at top of the wall batten. Check that the spacings are correct (**Fig 5**).

**Fig.5**



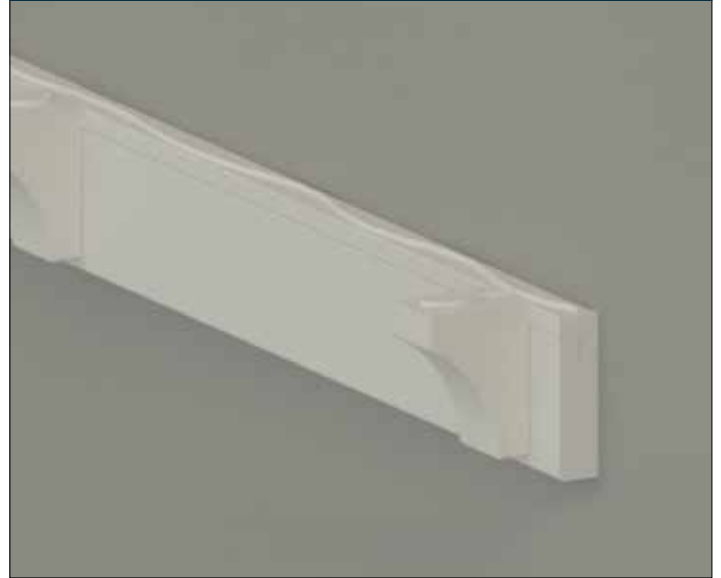
Next, measure between brackets and cut spacer to suit. Apply thin bead of PVA glue to the mouldings and offer spacer between brackets and into wall batten rebate (**Fig 6**).

**Fig.6**



Run a bead of PVA glue along top of spacers and brackets before fitting top shelf. This will create a stronger fix (**Fig 7**).

**Fig.7**



Offer shelf onto wall batten and bracket assembly. Drill a series of  $\varnothing 3\text{mm}$  pilot holes approx. 50mm deep, though back end of shelf so the drill enters spacer and wall batten location (**Fig 8**). Wipe off any excess glue with a damp cloth.

**Fig.8**



Secure top shelf in place using 3.5mm x 50mm screw supplied (**Fig 9**).

**Fig.9**



*For straight runs longer than 2.4m, you can join the pieces by either reverse mitre or butt jointing.*

*For internal corner, you can either mitre the corner or butt joint together.*

*For external corners, these will need to be mitred.*



Technical Helpline:  
**Freephone**  
**0800 085 3475**

